

# Oracle's Primavera Capital Planning



## INTRODUCTION

Oracle's Primavera Capital Planning gives planners and project staff a common platform for the collaborative management of project portfolios to ensure the most efficient use of capital funds.



## OVERVIEW

- ▶ Top-down and bottom-up visibility for planners and project managers
- ▶ Powerful cash flow capabilities across the portfolio lifecycle
- ▶ Multiple scenarios and data linked to projects during execution
- ▶ Streamlined, intuitive interface to display large volumes of project information
- ▶ Prioritise investments to maximise return
- ▶ Ensure efficient use of available capital funds
- ▶ Easily manage and manipulate large volumes of project information
- ▶ Collaborate and share project information

Number	Project Name	Total	13	14	
PSEP-0003	L-0210 REPL, 2.20M HP 16.96-	\$2,885,106.97	\$200,000.00	\$1,050,106.97	
PSEP-0004	L-0217 REPL, 4.24M HP 0.0021-	\$2,722,896.26	\$300,000.00	\$1,939,651.17	
PSEP-0005	L-0219 REPL, 6.01M HP 0.004-	\$4,274,889.89	\$600,000.00	\$1,700,000.00	
PSEP-0006	L-0214 REPL, 7.00M HP 0.004-	\$4,014,937.00	\$100,000.00	\$4,014,937.00	
PSEP-0009	L-0214 REPL, 0.02M HP 0.004-	\$2,125,000.00	\$175,000.00	\$43,389.97	
PSEP-0013	L-1054-1 REPL, 0.01M HP 0.004-	\$4,700,480.20	\$300,000.00	\$1,096,372.53	
PSEP-0014	L-1050-3 REPL, 0.03M HP 0.004-	\$1,433,780.00	\$375,000.00	\$884,780.00	
PSEP-0015	L-1050-5 REPL, 0.10M HP 0.004-	\$1,040,000.00	\$600,000.00	\$139,891.11	
		\$1,761,910.00	\$100,000.00	\$0.00	
<b>Total</b>		<b>\$26,626,899.45</b>	<b>\$4,540,729.75</b>	<b>\$14,856,598.29</b>	
<b>Target</b>		<b>\$27,800,000.00</b>	<b>\$2,000,000.00</b>	<b>\$8,000,000.00</b>	
<b>Difference</b>		<b>-\$1,173,100.55</b>	<b>-\$2,540,729.75</b>	<b>\$6,853,401.71</b>	
<b>Current Project Data</b>		L-0217 REPL, 4.24M HP 0.0021-	\$2,000,000.00	\$541,103.44	\$1,910,655.17
<b>Scenario</b>					
1	PSEP-0010	L-1102_1 REPL, 3.70M HP 3.414-	\$2,000,000.00	\$10,000.00	\$246,214.03
2	PSEP-0020	L-1102_2 REPL, 4.00M HP 0.48-	\$1,000,000.00	\$0.00	\$100,000.00
3	PSEP-0025	L-114_2 REPL, 0.00M HP 16.51-	\$2,000,000.00	\$205,110.28	\$204,744.19
4	PSEP-0026	L-114_2 REPL, 7.00M HP 0.01-	\$1,000,000.00	\$0.00	\$204,827.56
5	PSEP-0029	L-1101_1 REPL, 0.02M HP 0.01-	\$2,000,000.00	\$420,000.00	\$1,000,000.00

Screenshot

## FEATURES & BENEFITS

### ► Ideas through to approved portfolio

Primavera Unifier's Web-based platform fosters and controls the collection of project requests from the entire organisation. You can use preconfigured project attributes or configure your own forms to create portfolio scenarios for prospective projects that are then displayed in an intuitive grid format.

### ► Create multiyear plans

Create multiyear plans with information from ongoing projects rolling into subsequent period portfolios and manage multiple types of portfolio with different project types, with roll up reporting across the organisation.

### ► Detailed cash flow forecasting

This best in class cash flow forecasting engine provides an unparalleled ability to manage top-down and bottom-up planned, actual and forecasted costs. Choose the overall duration and granularity of the capital portfolio and set target budgets per period. Add and remove prospective projects to compare the target amounts per cash flow period.

### ► Share data with project teams

Planners can define planned cash flow as a top-down budget that can optionally be viewed by project teams once projects are underway. Actuals and forecast updates by project teams are also visible by the planner in a comprehensive portfolio grid.

### ► Linked project information

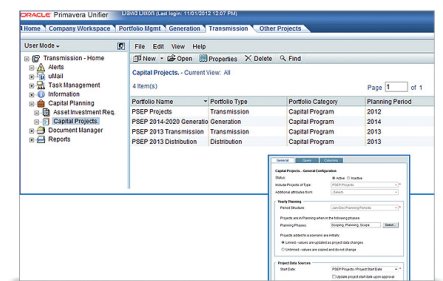
Linking portfolio projects to actual projects in execution gives planners full visibility of all of the desired project attributes including cash flow information. Projects can be individually linked or unlinked, letting planners capture alternate project information to be compared as baselines to the project already in execution.

### ► Document management

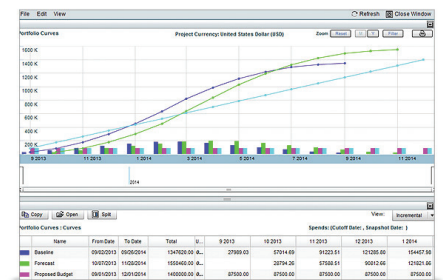
Primavera Capital Planning includes the robust Document Management module, giving you the ability to store documentation at the overall organisational level or at any level of the hierarchy. All documentation utilises tight permission controls to manage access and Oracle's AutoVue technology can be used to view and mark up hundreds of different field types without the need to install the native application.

### ► Dashboards and reporting

Manage capital planning at any level of the organisations hierarchy with each level utilising Primavera Unifier's standard dashboard module. All dashboards can be individually configured to roll up desired information in graph or table formats. The User-Defined Reports module also allows fully configurable reports during project execution.



Screenshot



Screenshot

## ORACLE'S PRIMAVERA UNIFIER PRODUCT SET INCLUDES:

- Primavera Capital Planning
- Primavera Cost Control
- Primavera Project Delivery Management

- Primavera Facility Management
- Primavera Real Estate Management

## RELATED SERVICES

- Primavera Unifier Training
- Application Consultancy
- Integration Consultancy
- Health Checks

## FIND OUT MORE

Contact one of our expert advisors today to see how we can help you.

## UK Office

+44 (0)208 991 3305  
info@milestoneuk.com  
www.milestoneuk.com

## South Africa Office

+27 (0)11-655-7117  
info@milestonesa.co.za  
www.milestonesa.co.za