

INTRODUCTION

Legare offers a fast and simple link between Oracle Primavera and Enterprise Asset Management (EAM) and Enterprise Resource Planning (ERP) systems by facilitating the exchange of data within the Planning, Maintenance and Finance environments. This enables organisations to benefit from an integrated project plan.



OVERVIEW

- ▶ Loads data from any source, eg. SAP, Oracle, Maximo, Microsoft Project and Contractor Work Management systems
- ▶ Common examples of this include: risks, activity codes, time, expenses, resource IDs and roles
- ▶ Growing list of data formats includes XER, Oracle, Excel, XML, P6, Access and MS SQL
- ▶ Uses the Primavera API - with tools for Scheduling, Forecasting, Dictionary Synchronisation and Relationships
- ▶ Integrated, optional modules: RRX Risk Loader, Cost and Bucket Loading, fiXER manager
- ▶ Maximises planners time and provides a comprehensive audit trail

Functionality

Legare provides a mechanism to easily manage the complexities of import, export and integration tasks in a multi-project environment through an intuitive user interface, designed with early adoption and minimal user training in mind.

▶ **Mapping and Transformations**

Data transformations may be described during the mapping process, allowing simple or complex transformations to take place within Legare.

▶ **Connectors**

Extend Legare’s functionality to communicate with multiple data sources, including MS Excel, XER, Oracle, MS SQL Server, MS Access and MS Project.

▶ **Forecaster**

Take seed activities from a data source such as Maintenance Routines in an asset management system and create forward projected activities in Primavera.

▶ **Dictionary**

Maintain the integrity of Primavera’s Resource and Code dictionaries and prevent unwanted Resource and Code values appearing in the Primavera Dictionary.

▶ **Scheduler**

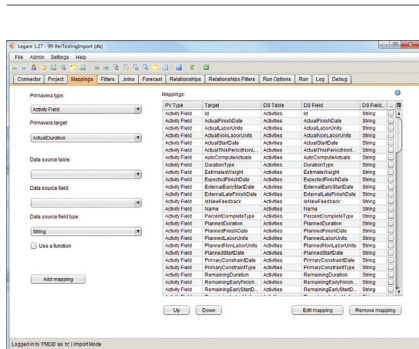
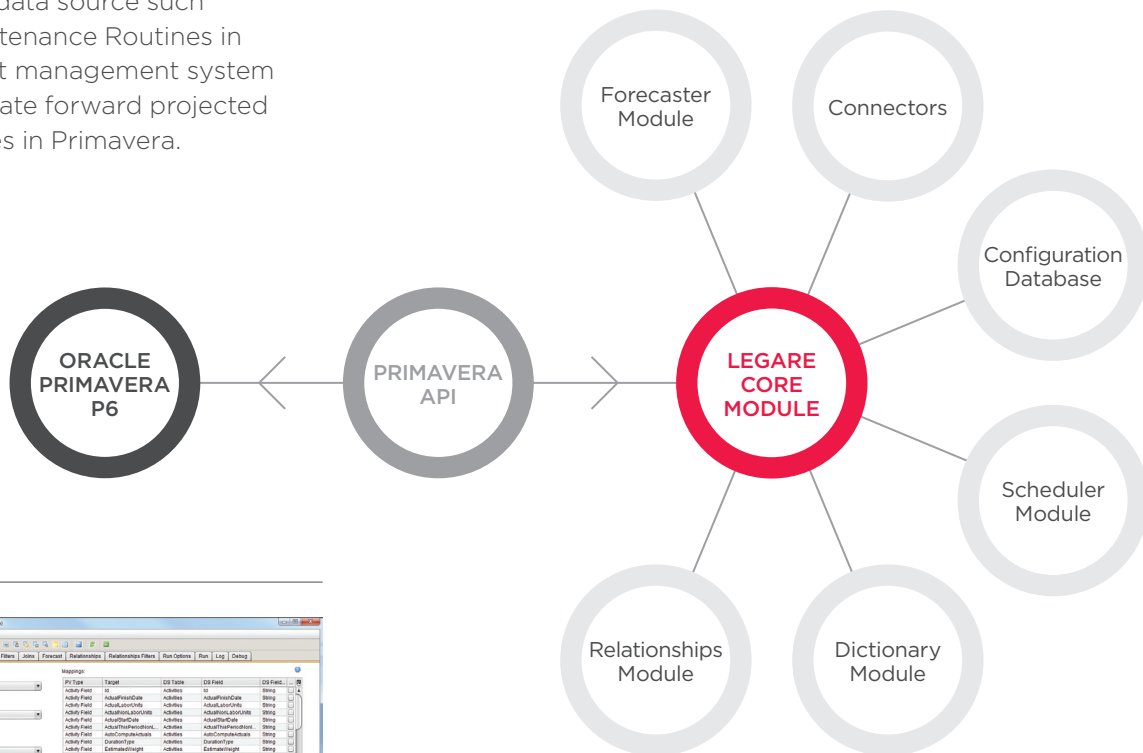
Permit previously generated Configuration Templates to be executed in an unmanned environment, using stacking and dependencies.

▶ **Configuration Database**

The Configuration Database is a repository for storing and controlling access to critical import, export and integration tasks.

▶ **Security and Integrity**

Security and Integrity is maintained to a high level throughout Legare with all activity to and from Primavera taking place within the Primavera API.



Screenshot

Scenarios

Whether you are looking for a solution to collect progress internally or externally through to fully automated integration with Finance and Maintenance systems, Legare provides a solution that offers Planning Departments an opportunity to create and easily maintain an integrated plan.

► Internal Updates

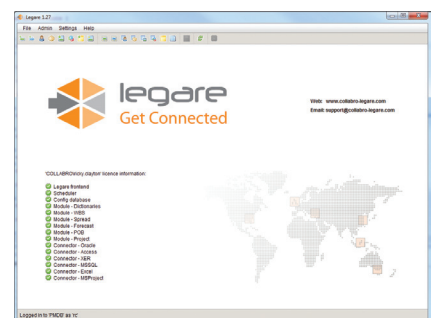
Collecting internal company progress updates quickly and efficiently is important for all projects. Legare and the MS Excel connector collect progress updates internally in a cost efficient manner. Export relevant information to Excel, distribute and update accordingly and then re-import the Excel file through tightly controlled use of import and export templates.

► External Updates

Outsourcing programmes to sub-contractors means that it is vital to maintain an accurate top down view of all project activity. For organisations who don't wish to allow direct access to the Primavera database, updates can be collected through Primavera XER files which can be time consuming and challenging for Planners. The XER connector extends the Legare core functionality to import XER files, treating them like it would any other data source. Filters and sort criteria can be applied and the optional Dictionary module used.

► Enterprise Level Integration

Legare's base functionality can be extended significantly to provide enterprise-wide integration. Connector technology extends the base product to provide connectivity with most common ERP and EAM systems, including SAP, Oracle, Maximo and IFS. Configuration templates may be published to the Configuration Database and executed in a scheduled and unmanned environment. The Relationship module maintains network logic on inbound and outbound processes, while Forecaster creates activities in Primavera without the need to flood the asset management system with ghost work orders.



Screenshot

FEATURES & BENEFITS

▶ Modular system

In its basic form Legare gives a desktop based productivity for Planning Engineers wishing to extract selective planning data from Primavera into MS Excel and re-import back to Primavera.

▶ Share information

The base product allows planning information to be shared across departments and organisations that may not have access to Primavera.

▶ Add on functionality

As organisational requirements mature you can add on additional features such as Scheduler and additional connectors offering integration with other data sources.

▶ Data transfer and write-back

Bi-directional transfer of data between Primavera and other data sources maintains data integrity, removes the potential for user error and puts your data where you want it.

▶ Flexible configurations

Legare permits the creation of multiple configurations and data mappings which can be easily modified without the need for software updates or specialist intervention. Configurations can be set up by users giving total control and flexibility.

▶ Intuitive user interface

Guiding the user through the logical workflows the logical and intuitive user interface means minimal training requirements and a quick adoption process.

▶ Feedback and error reporting

Error reports guide users to particular issues that have occurred so that you can identify and rectify incorrect logic that may have been built into configurations or anomalies in source or destination data reducing troubleshooting time.

▶ Primavera business rules

Legare accesses data through the Oracle Primavera API so users can log in using Primavera credentials and comply with Primavera Business Rules to ensure data integrity, security and future proofing.

▶ Work breakdown structure (WBS)

Legare's core functionality maintains the work breakdown structure (WBS) on import and export, forcing the project manager, team members and customers to define the steps required to build and deliver the product or service, laying the groundwork for developing an effective schedule and good budget plans.

▶ Legare Forecaster

Forecaster accesses Work Orders and Planned Maintenance Routines from the host system to create Maintenance Routines without committing work orders into the source systems, and help build Planned Maintenance Work Orders for green-field sites.

▶ Seamlessly create connections

Connectors offer users the ability to access multiple and different data sources, avoiding the need to acquire different products for data transformation and integration projects.

▶ Primavera reference tables

Using standardised references between the systems such as Activity Code Definitions and Resource Definitions leads to reduced user errors.

▶ Schedule batch jobs

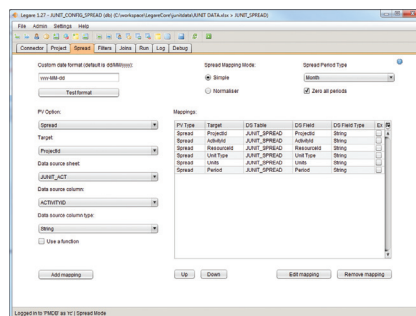
Scheduler lets you schedule batch jobs to run at user-defined times with no user intervention required, giving a high availability of system resource during peak times, high availability of planning data and no time wasted waiting for planning data updates.

▶ Configuration database

Save and load configurations from a central repository cutting down on duplication and supporting standardisation and collaboration.

▶ Transfer auditing

Get details of who performed a run, run type, configuration type, time started, time finished, success/failure status, duration of run and unique log reference to assist issue resolutions, accountability and reduce troubleshooting time.



Screenshot

RELATED SERVICES

- ▶ Training
- ▶ Application Consultancy
- ▶ Integration Consultancy
- ▶ Health Checks

FIND OUT MORE

Contact one of our expert advisors today to see how we can help you.

UK Office

+44 (0)208 991 3305
info@milestoneuk.com
www.milestoneuk.com

South Africa Office

+27 (0)11-655-7117
info@milestonesa.co.za
www.milestonesa.co.za