

ORACLE[®]

PRIMAVERA

New Features in Primavera Analytics 16.2

COPYRIGHT & TRADEMARKS

Copyright © 2016, Oracle and/or its affiliates. All rights reserved.

Oracle is a registered trademark of Oracle Corporation and/or its affiliates. Other names may be trademarks of their respective owners.

This software and related documentation are provided under a license agreement containing restrictions on use and disclosure and are protected by intellectual property laws. Except as expressly permitted in your license agreement or allowed by law, you may not use, copy, reproduce, translate, broadcast, modify, license, transmit, distribute, exhibit, perform, publish or display any part, in any form, or by any means. Reverse engineering, disassembly, or decompilation of this software, unless required by law for interoperability, is prohibited.

The information contained herein is subject to change without notice and is not warranted to be error-free. If you find any errors, please report them to us in writing.

If this software or related documentation is delivered to the U.S. Government or anyone licensing it on behalf of the U.S. Government, the following notice is applicable:

U.S. GOVERNMENT RIGHTS

Programs, software, databases, and related documentation and technical data delivered to U.S. Government customers are “commercial computer software” or “commercial technical data” pursuant to the applicable Federal Acquisition Regulation and agency-specific supplemental regulations. As such, the use, duplication, disclosure, modification, and adaptation shall be subject to the restrictions and license terms set forth in the applicable Government contract, and, to the extent applicable by the terms of the Government contract, the additional rights set forth in FAR 52.227-19, Commercial Computer Software License (December 2007). Oracle USA, Inc., 500 Oracle Parkway, Redwood City, CA 94065.

This software is developed for general use in a variety of information management applications. It is not developed or intended for use in any inherently dangerous applications, including applications which may create a risk of personal injury. If you use this software in dangerous applications, then you shall be responsible to take all appropriate fail-safe, backup, redundancy and other measures to ensure the safe use of this software. Oracle Corporation and its affiliates disclaim any liability for any damages caused by use of this software in dangerous applications.

This software and documentation may provide access to or information on content, products and services from third parties. Oracle Corporation and its affiliates are not responsible for and expressly disclaim all warranties of any kind with respect to third party content, products and services. Oracle Corporation and its affiliates will not be responsible for any loss, costs, or damages incurred due to your access to or use of third party content, products or services.

NOTE: Duplication or distribution of this document without written permission from Oracle Corp. is prohibited.

CONTENTS

- New Features in Primavera Analytics 16.2.....1**
- D3 Dashboard.....2
- Advanced Analytics Dashboard3
- Space Management History Page.....4
- Cost Sheet Page5
- Additional Enhancements.....6

New Features in Primavera Analytics 16.2

Enhancements to Primavera Analytics 16.2 help you gain new insight into P6 and Unifier data:

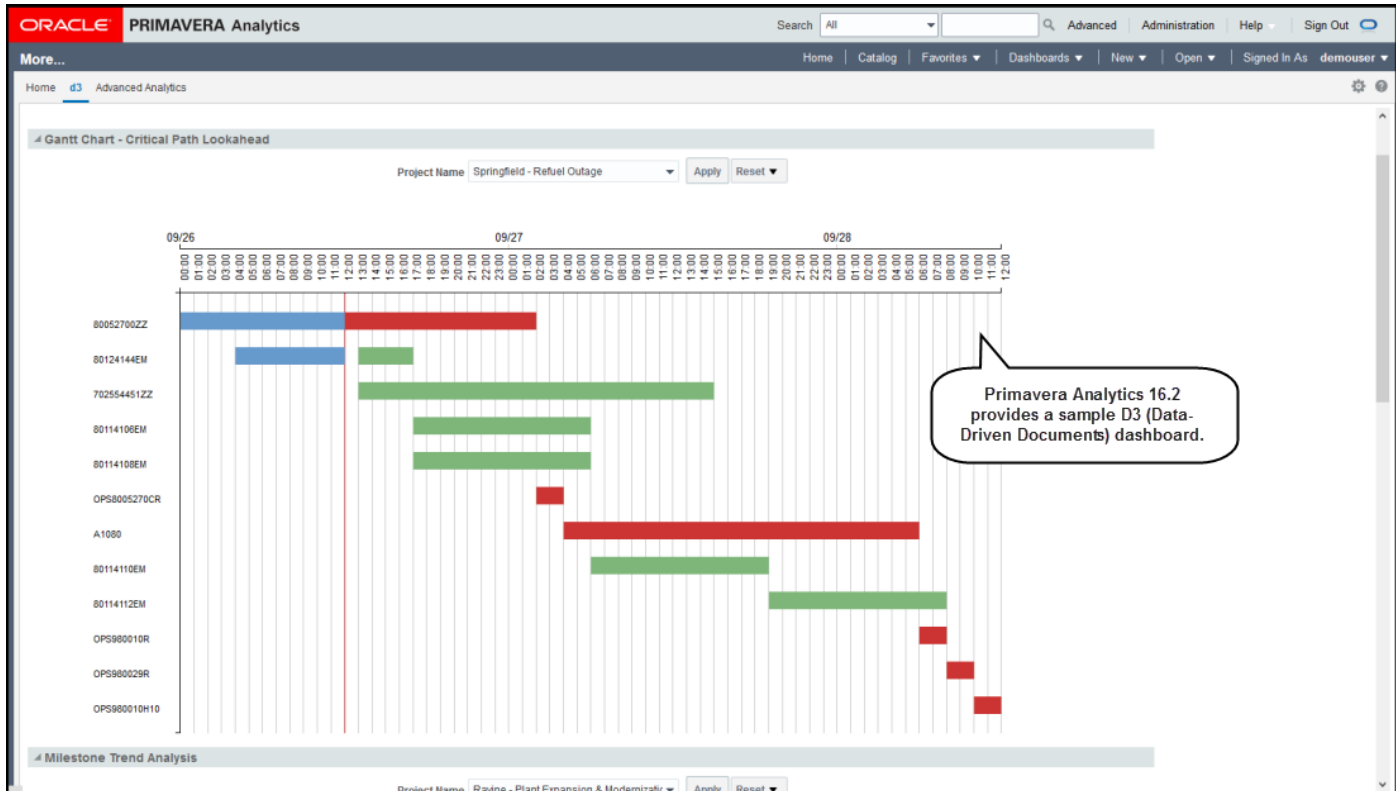
- Sample D3 dashboard
- Sample Advanced Analytics dashboard
- Space Management History page
- Cost Sheet page
- Generic Cost Sheet subject area
- P6 Cost Breakdown Structure support
- Oracle Transparent data encryption
- Customer-supplied encryption

The screenshot displays the Primavera Analytics 16.2 interface, which is divided into several sections. At the top, there is a navigation bar with the Oracle logo and the text 'PRIMAVERA Analytics'. Below this, the main content area is titled '05. Facilities and Real Estate'. The interface includes a search bar, navigation tabs (Home, Catalog, Favorites, Dashboards, New, Open), and user information (Signed In As: demouser). The main dashboard is divided into several panels. On the left, there are four summary cards for 'Leases' with the following values: '\$143,600 Lease Amend. Requests (Approved)', '\$318,950 Lease Invoices (Approved)', '\$339,000 Lease Payments (Approved)', and '\$1,384,888 Leases (Active)'. The central panel shows a 'Cost Sheet' view with filters for Region, Site, Building, Year, Quarter, Month, and Currency. A pie chart titled 'Approved Budget by Root Cost Code' is visible. Below this, there is a 'Space Mgmt History' section with a 'Cost Sheet' view, showing a 'Total Rent Collected' of '\$21,389,576'. The bottom section features an 'Advanced Analytics' dashboard with a 'Trendline' chart showing 'Trend Actual Labor Units, Actual Labor Units' and a bar chart showing 'Monthly Rent' and 'Monthly Change' for the year 2015. A callout box points to the bar chart with the text: 'Primavera Analytics 16.2 provides enhancements to help you gain new insight into P6 and Unifier data.'

D3 Dashboard

Primavera Analytics 16.2 provides a sample D3 (Data-Driven Documents) dashboard to demonstrate support for D3 graphics.

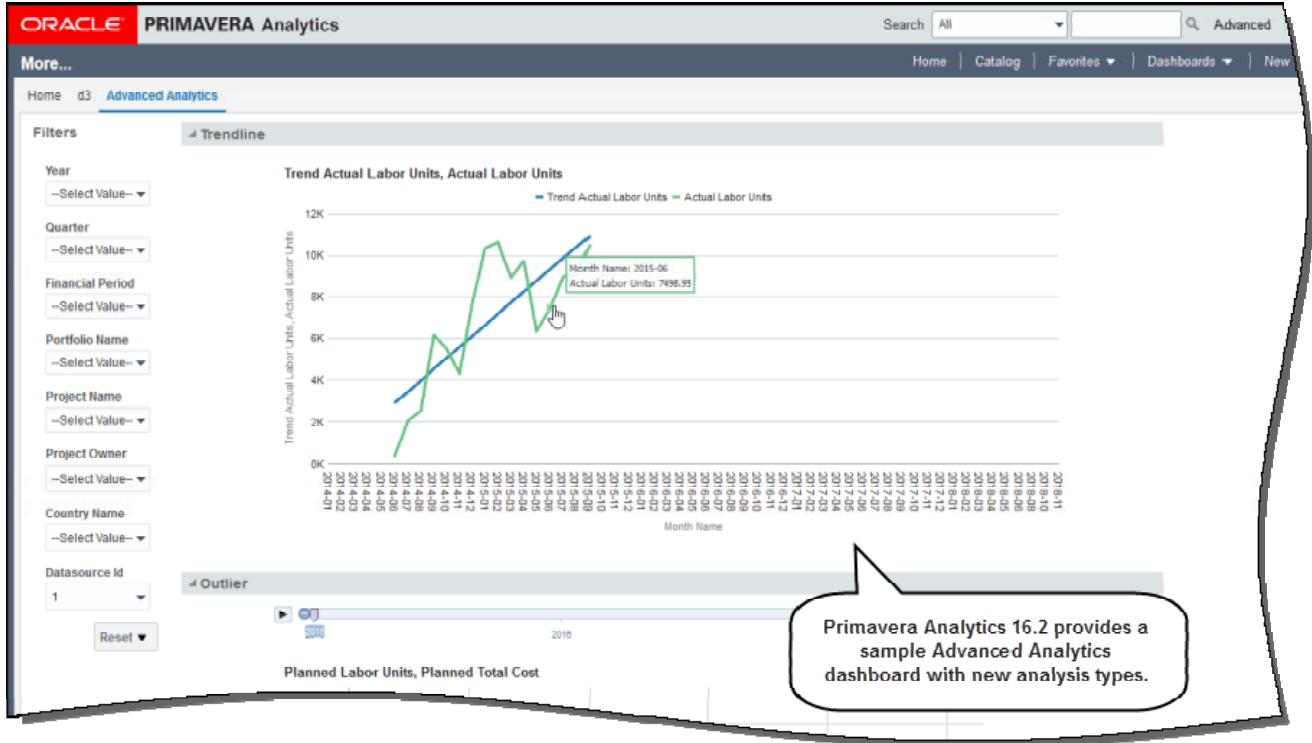
D3 is a new, advanced type of graphics that enables users to manipulate data into customizable, visual representations of Analytics analyses. D3 graphics incorporate optional components and technologies within Oracle Business Intelligence (OBI).



To access this feature: The sample D3 dashboard is located on the d3 page of the More dashboard.

Advanced Analytics Dashboard

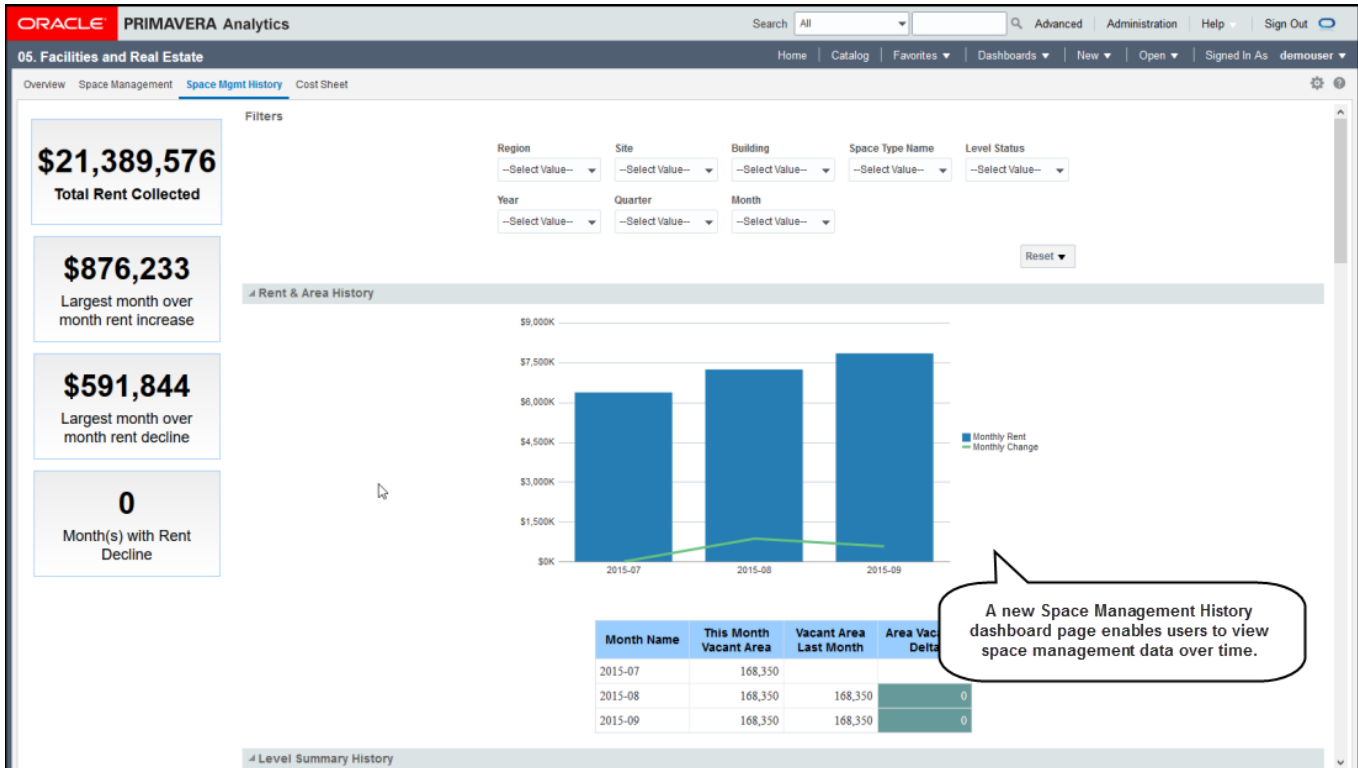
Primavera Analytics 16.2 provides an Advanced Analytics sample dashboard in Oracle Business Intelligence (OBI) 12c, which enables users to arrange data into illustrations.



To access this feature: The sample Advanced Analytics dashboard is located on the Advanced Analytics page of the More dashboard.

Space Management History Page

Primavera Analytics 16.2 has added a Space Management History page to the Facilities and Real Estate dashboard. The new page provides charts that display space management data captured over time.



To access this feature: The Space Management History page is located on the Facilities and Real Estate dashboard.

Cost Sheet Page

Primavera Analytics 16.2 provides a new Cost Sheet page on the Facilities and Real Estate dashboard that displays data based on the Unifier generic cost sheet.

The screenshot displays the Primavera Analytics 16.2 interface for the '05. Facilities and Real Estate' dashboard. On the left, there are four summary cards for Leases: Lease Amend. Requests (\$143,600), Lease Invoices (\$318,950), Lease Payments (\$339,000), and Leases (\$1,384,888). Below these is a Budget card for Annual Budget (\$150,000). The main area features a 'Filters' section with dropdowns for Building, Year, Quarter, Month, and Currency. A callout bubble points to the filters, stating: 'The new Cost Sheet page displays data from the Unifier generic cost sheet.' Below the filters is a section for 'Approved Budget by Root Cost Code' containing a pie chart and a table. The pie chart is labeled 'Annual Budget (Approved)' and shows a large green segment for Expenses, with smaller segments for Asset, Liability, and Revenue. The table below it is titled 'Root Level Cost Code Annual Budget (Approved)'. At the bottom, there is a 'Cost Sheet' section with a table and a bar chart. The table has columns for Annual Budget, Budget Changes-FM, Purchase Orders-FM, and Invoices-Generic-FM. The bar chart is titled 'Purchase Orders-FM (Approved)' and shows a single blue bar.

Root Level Cost Code	Annual Budget (Approved)
Asset	\$1,113,000
Expenses	\$15,104,888
Liability	\$100,000
Revenue	\$296,000

Cost Code Hierarchy	Annual Budget (Approved)	Budget Changes-FM (Approved)	Purchase Orders-FM (Approved)	Invoices-Generic-FM (Approved)
All	\$16,613,888	\$873,880	\$562,760	\$70,980
Asset	\$1,113,000	\$488,380	\$227,730	\$53,230
Equity	\$0	\$297,500	\$0	\$0
Expenses	\$15,104,888	\$81,600	\$244,000	\$17,750

To access this feature: The Cost Sheet page is located on the Facilities and Real Estate dashboard.

Additional Enhancements

Generic Cost Sheet

Primavera Analytics 16.2 provides a new subject area, Generic Cost Sheet, to support Unifier Facilities and Real Estate data. It enables you to incorporate generic cost data in analyses and dashboards. The generic cost sheet uses generic cost business processes to capture costs for a generic shell. These costs include:

- Rent
- Lease payments
- Landscape care
- Building maintenance and repair
- Remodeling of building interiors

The generic cost sheet also enables you to capture generic cost transaction data based on a timescale, such as quarterly or yearly. Each configurable Unifier shell can have one generic cost sheet.

P6 Cost Breakdown Structure (CBS) Support

Primavera Analytics 16.2 supports CBS assignments from P6 at the activity, resource assignment, and activity expense level. This feature enables Analytics users with P6 and Unifier integrations to analyze P6 data along with the corresponding Unifier CBS codes.

Oracle Transparent Data Encryption

The Oracle database now incorporates Oracle Transparent Data Encryption, which enables users to encrypt sensitive operating system data files where data is stored. After the data is encrypted, it is transparently decrypted only for authorized personnel or applications when the data is accessed. To prevent unauthorized decryption, TDE stores encryption keys in a security module external to the database.

Customer-Supplied Encryption

In addition to the security provided by TDE, Oracle Primavera Data Warehouse now supports customer-supplied encryption. Passwords for all schemas that require data to move from Primavera databases into the Primavera Data Warehouse are encrypted to add another measure of data protection.