

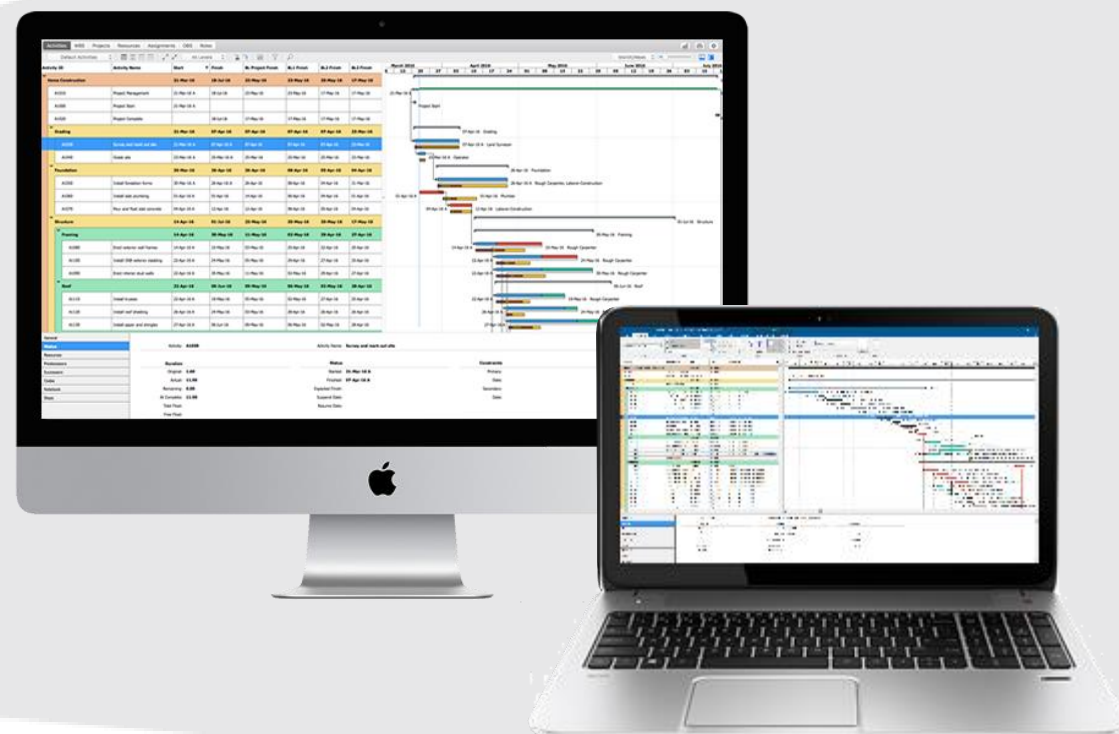


ScheduleReader™

Reader for .XER, .XLS and .XLM schedules
exported from Oracle® Primavera P6

What is new in ScheduleReader™ 7.5

- Earned Value Analysis;
- Stacked Histogram view;
- Group & Sort in WBS view;
- Filter, Group & Sort in Project view;
- New Graphical Reports categories;
- Print views from "Bottom" pane;
- View scheduling settings.



About

| Mission

Offer a simple and cost effective tools that **maximize productivity** and **modernize work** when sharing schedules.

Our Values

Simple
Easy to Use

Smart
All-in-One tool

Trusted
Reliable Partner

More flexibility while working

What's new in ScheduleReader 7.5

Key Benefits of ScheduleReader 7.5

- View detailed resources/roles allocation in specific time period using the **Stacked Histogram** view.
- Create different graphical reports on **Activity**, **WBS** or **Project** level.
- Navigate through projects in Project view using **project filters**.
- **Group** and **Sort** the data in the **WBS** and **Project views** for viewing project.
- **Export** DCMA 14 **data** and make detailed analysis in MS Excel.

How we stand against competitors

Feature	EV Analysis	Stacked Histogram	WBS view features	Project view features	Report categories
ScheduleReader	✓	✓	✓	✓	✓
XER Toolkit	✓				✓
Project Tracker	✓				
Steelray Project Viewer					
Asta Project Viewer		✓			

Earned Value Analysis

View and analyze the project status



EV Analysis

All ScheduleReader users will be able to view specific schedule and cost parameters that are characteristic for EV Analysis.

Benefits

Compare the current project status with the baseline schedule in order to get information whether the project plan is executed according the plans.

File

Activities

WBS

Projects

Resources

Assignments

OBS

Roles

Reports

Linear Scheduling

Project Expenses

Progress Update

Format

EVA.xer - ScheduleReader

Style ?

Earned Value - Cost Variance

Layout

Activity

Details

Panes

Table

Activity

Resources

Expenses

Predecessors

Successors

Outline

Filter

Auto Filter

Group

Sort

Go to Activity

Calendar

Financial Periods

View

Quarter/Month

Customize Timescale

Find

Activity ID	Activity Name	Cost Variance	Cost Variance - Labor Units	Cost Variance Index	Cost Variance Index - Labor Units
EVA					
EC1010	Building P				
EC1080	Curbing				
EC2430	Substanti				
Building 1					
EC2440	Complete				
Structure					
EC1090	Building P				
EC1140	First Floor				
EC1170	Second Fl				
EC1190	Second Fl				
EC1210	Third Floor				
EC1240	Third Floor Masonry Structure	\$112.00	3.20h	0.05	0.05h
EC1340	Stair and Elevator Masonry Structure	\$806.40	23.04h	1.00	1.00h
EC1250	Fourth Floor Slab & Collar Beam	(\$2,492.00)	-71.20h	-2.47	-2.47h
EC1300	Fourth Floor Masonry Structure	\$0.00	0.00h	0.00	0.00h
EC1310	Roof Slab	\$0.00	0.00h	0.00	0.00h
EC1350	Roof Slab/Collar Beam	\$0.00	0.00h	0.00	0.00h
Roof					

Customize Columns

Available Columns

Earned Value

Accounting Variance

Accounting Variance - Labor Units

Actual Cost

Budget At Completion

Budget At Completion (BAC) - Labor Units

Cost Performance Index

Cost Performance Index - Labor Units

Earned Value Cost

Earned Value Labor Units

Estimate at Completion Cost

Estimate at Completion-Labor Units

Estimate To Complete

Estimate To Complete Labor Units

Inserted Columns

Activity ID

Activity Name

Cost Variance

Cost Variance - Labor Units

Cost Variance Index

Cost Variance Index - Labor Units

Edit Column

Close

Stacked Histogram

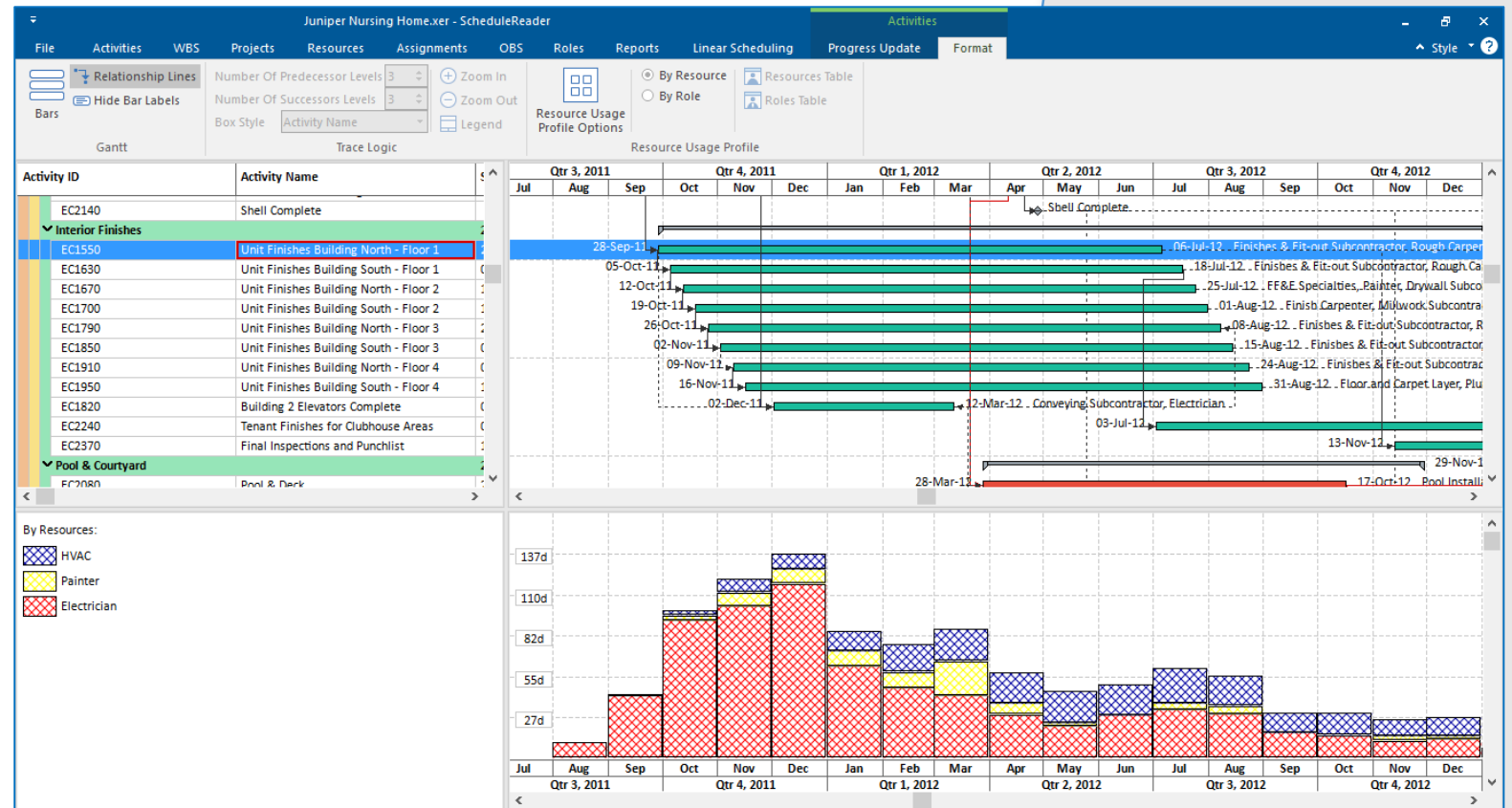
Analyze resources and roles units and costs

Various types of information

Organize the project profiles and specify which information to be displayed in the graph: cost or units.

Benefits

With the use of the Stacked Histogram, you can see the relative proportion of the resource/role allocation as well as how specific resource or role contribute to the total labor in a specific time period.



New "Activity" category in Graphical Reports

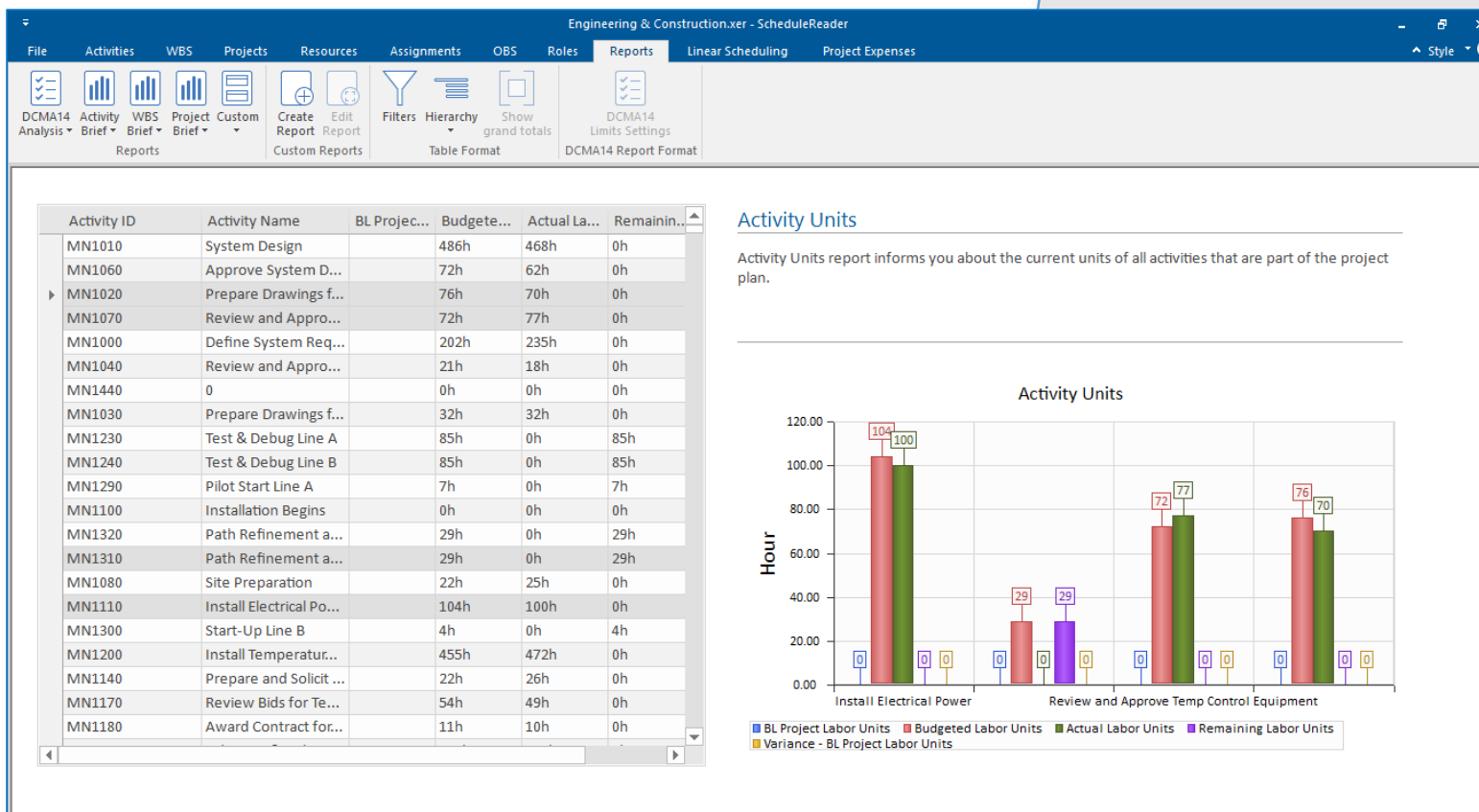
View reports on activity level

New report category

ScheduleReader users will be able to view different reports with information on activity level.

Benefits

You can use the graphical reports from this category to provide business critical information to PMO, project stakeholders and sponsors, making the business reporting process meaningful.



New "WBS" category in Graphical Reports

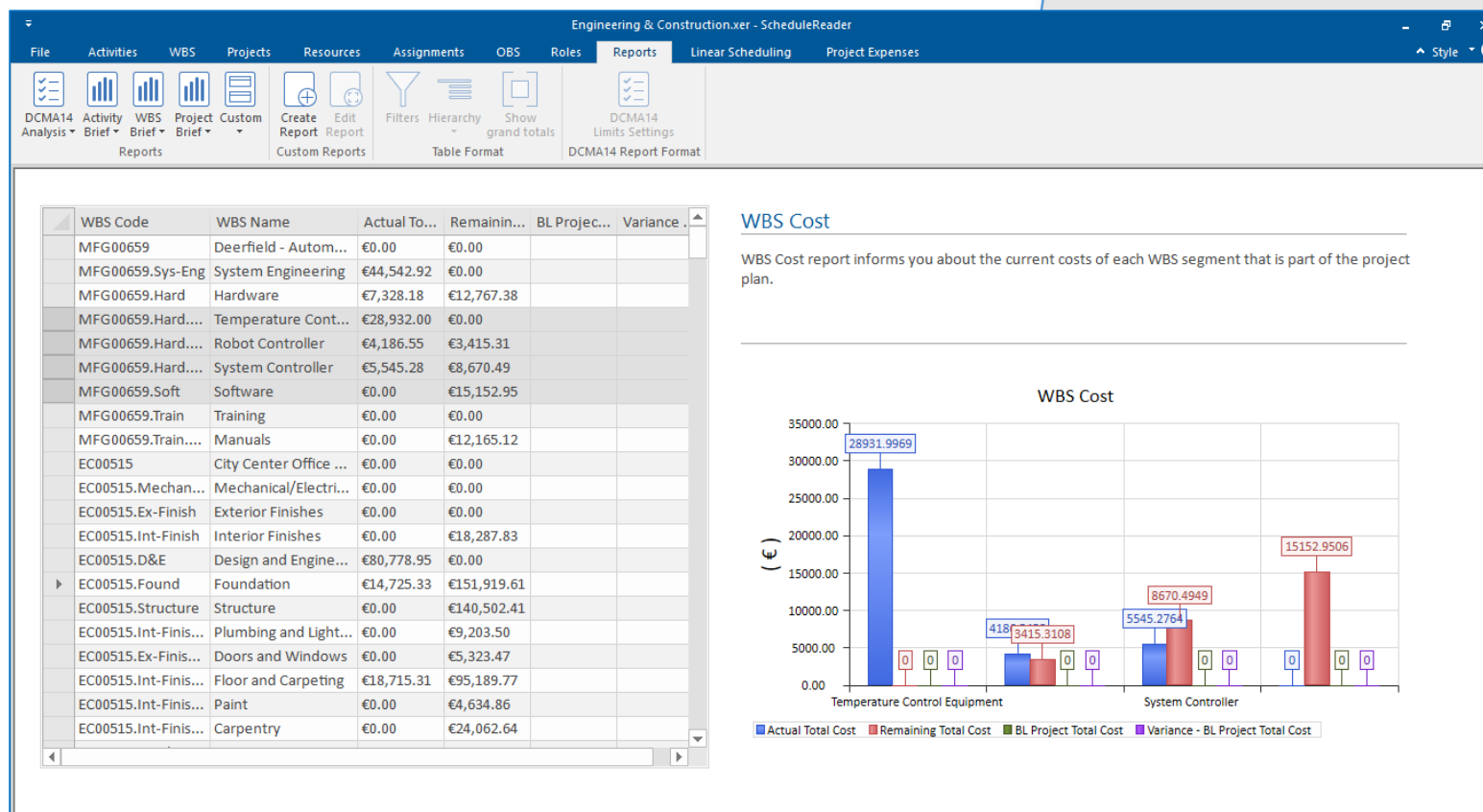
View reports on WBS level

New report category

ScheduleReader users will be able to view different reports with information on WBS level.

Benefits

You can use the graphical reports from this category to provide business critical information to PMO, project stakeholders and sponsors, making the business reporting process meaningful.



New "Project" category in Graphical Reports

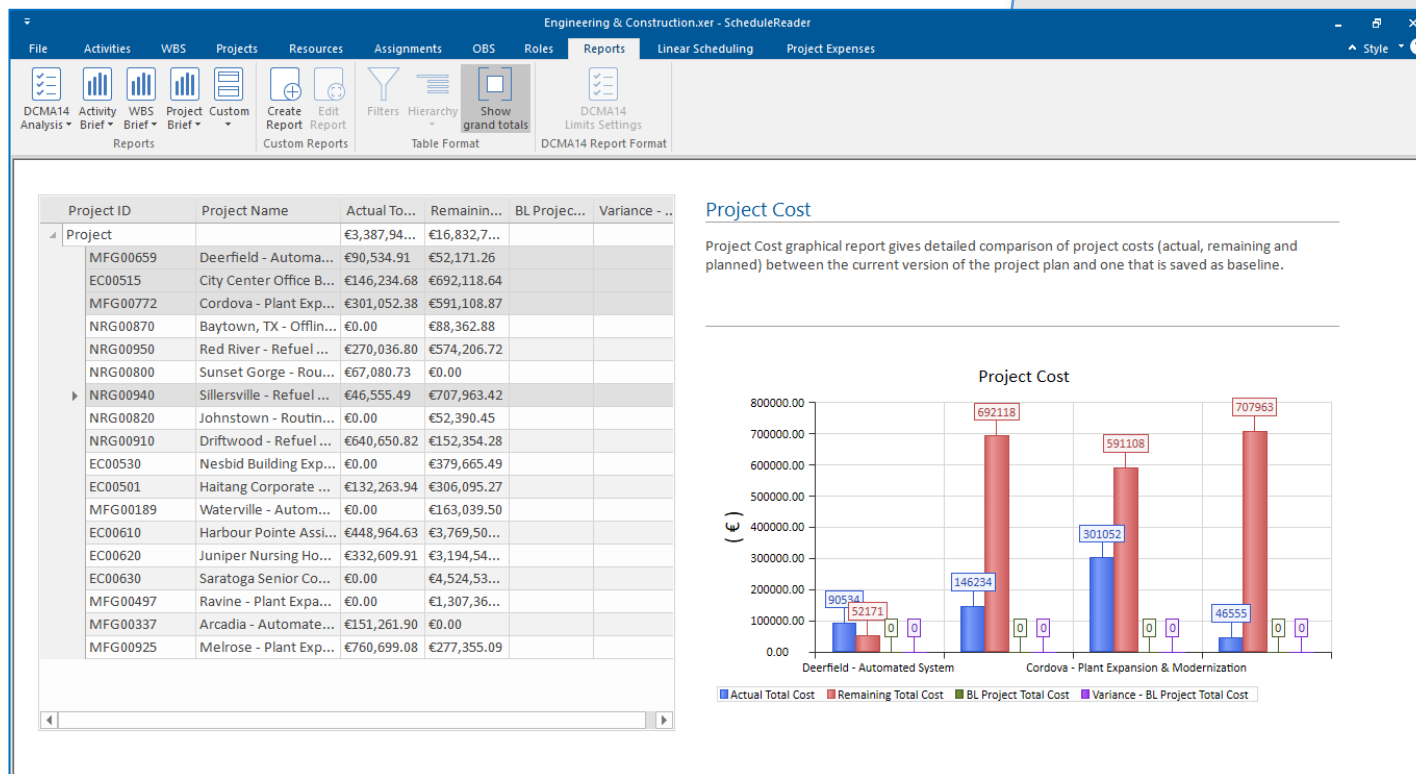
View reports on project level

New report category

ScheduleReader users will be able to view different reports with information on project level.

Benefits

You can use the graphical reports from this category to provide business critical information to PMO, project stakeholders and sponsors, making the business reporting process meaningful.



Group & Sort in WBS view

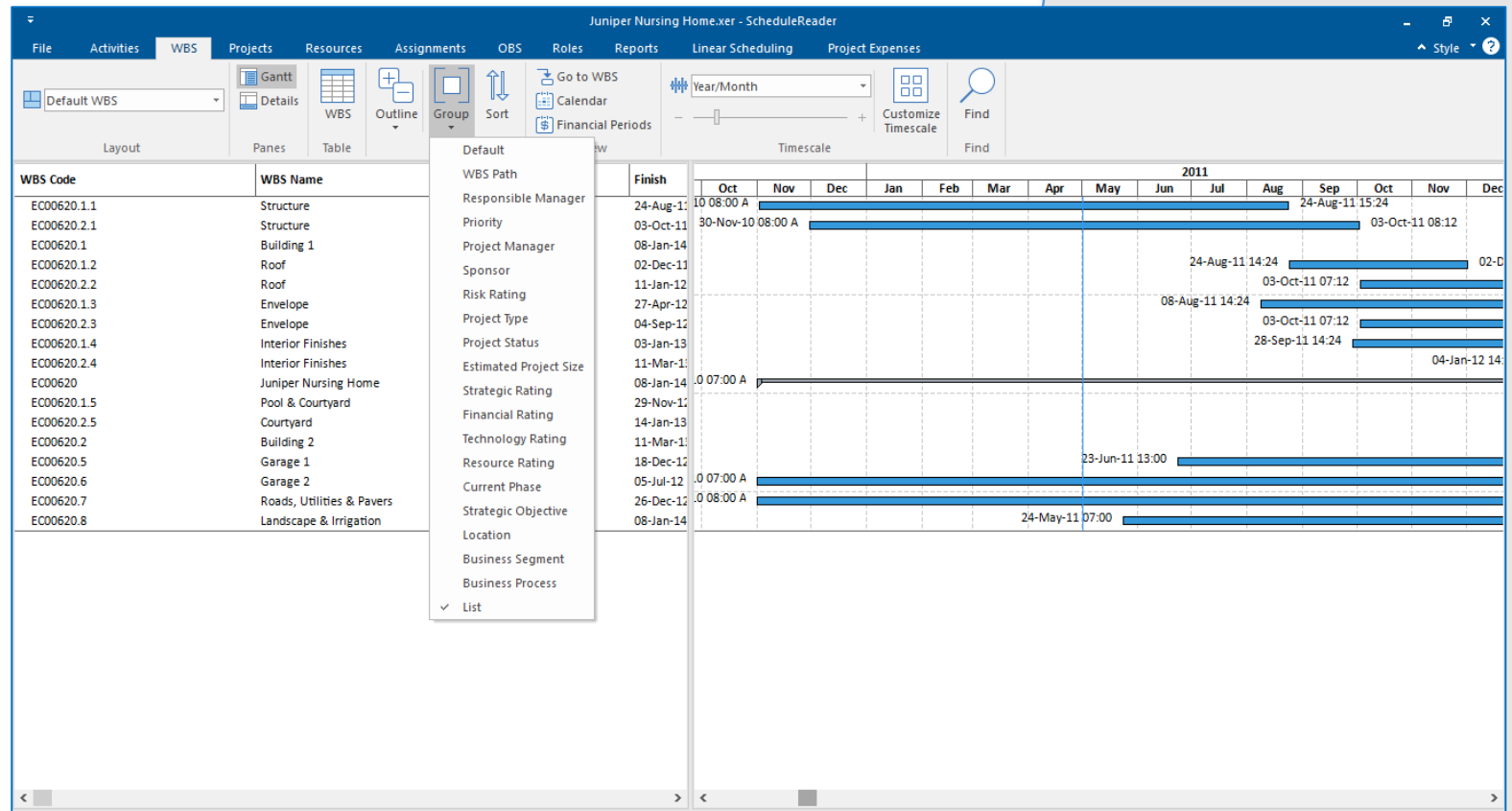
Organize & arrange the WBS according your needs

Group & Sort

You can organize and arrange the WBS in the project plan by multiple Activity Codes/UDFs or by more than one parameter.

Benefits

Organize the WBS by different parameters that are specific for the organization or make more detailed arrangement using multiple project parameters. Sort the information inside the view in any custom way they want, specifying its own sorting criteria



Filter in Project view

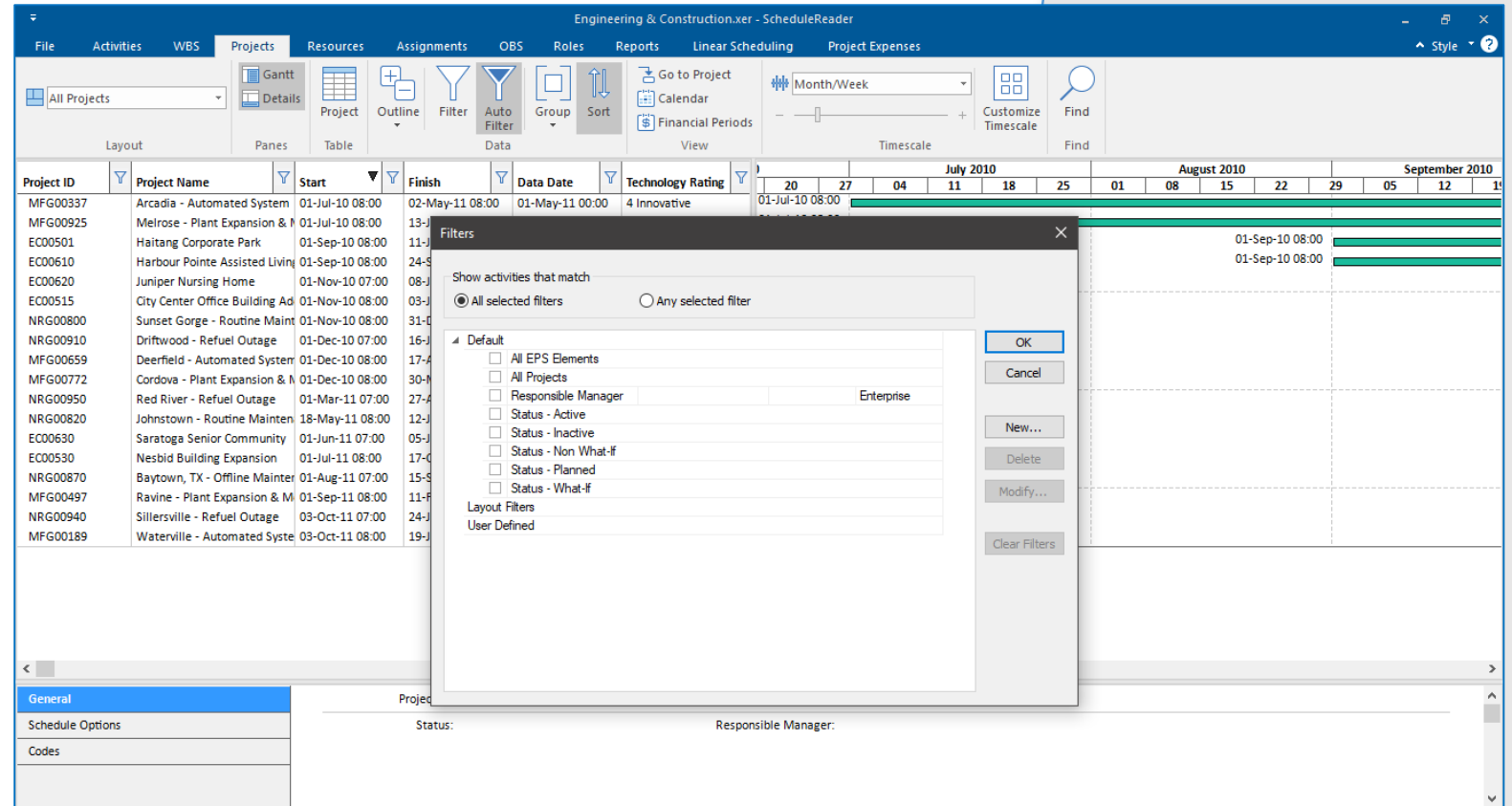
Filtering option for project table

Filtering

This feature enables you to filter data in project table based on different filtering criteria.

Benefits

You can use the filtering option in the project to quickly find, show or hide – in one or more columns of data.



Group & Sort in Project view

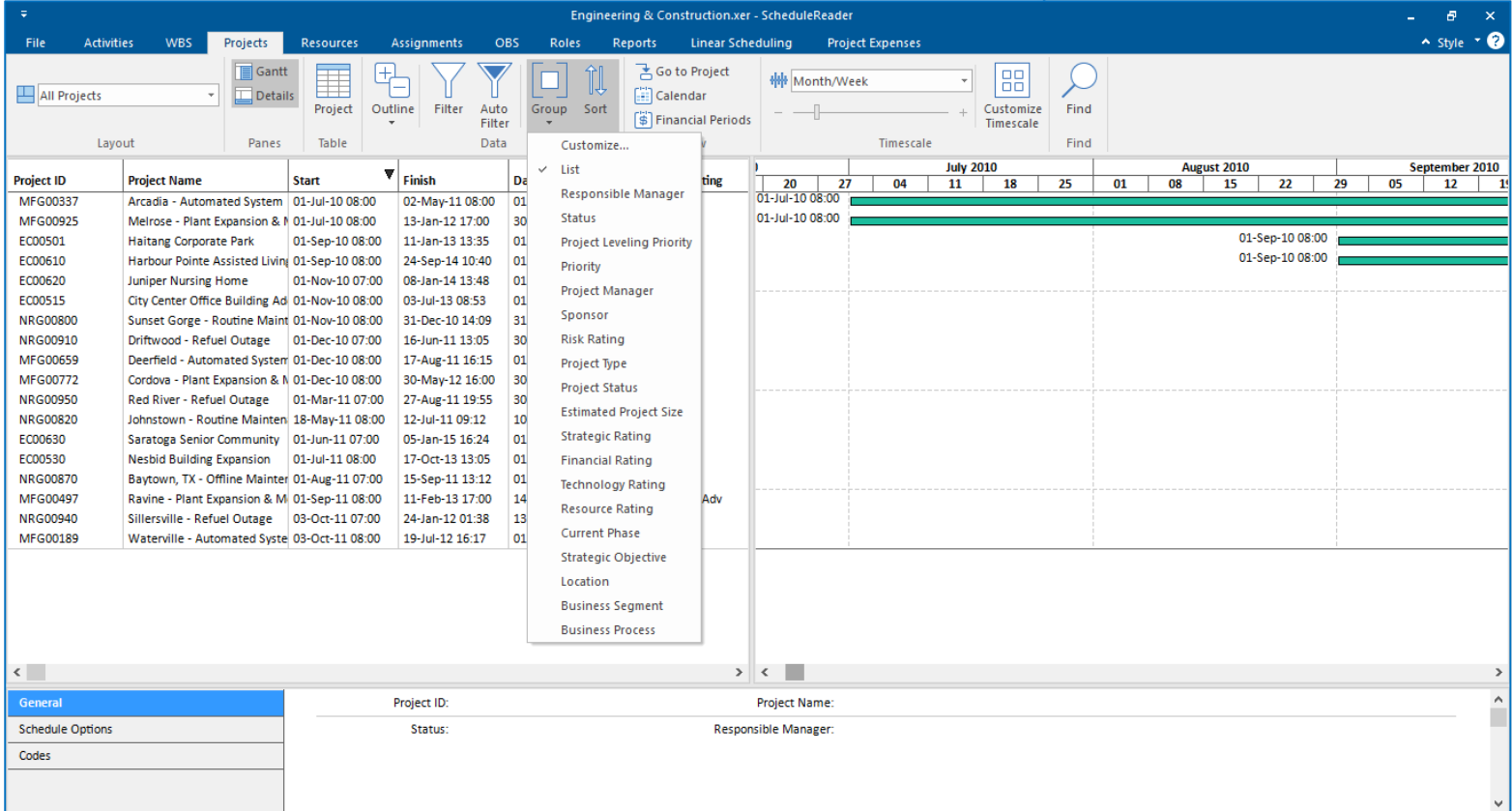
Organize & arrange the project according your needs

Group & Sort

You can organize and arrange the project in the project plan by multiple project Codes/UDFs or by more than one parameter.

Benefits

Organize projects by different parameters that are specific for the organization or make more detailed arrangement using multiple project parameters. Sort the information inside the view in any custom way they want, specifying its own sorting criteria



The screenshot displays the ScheduleReader software interface for 'Engineering & Construction.xer'. The 'Projects' tab is active, showing a list of projects with columns for Project ID, Project Name, Start, and Finish. A context menu is open over the project list, showing options for 'Group' and 'Sort'. The 'Sort' menu is expanded, listing various criteria for sorting, including List, Responsible Manager, Status, Project Leveling Priority, Priority, Project Manager, Sponsor, Risk Rating, Project Type, Project Status, Estimated Project Size, Strategic Rating, Financial Rating, Technology Rating, Resource Rating, Current Phase, Strategic Objective, Location, Business Segment, and Business Process. The background shows a Gantt chart view with a timeline from July 2010 to September 2010.

Project ID	Project Name	Start	Finish
MFG00337	Arcadia - Automated System	01-Jul-10 08:00	02-May-11 08:00
MFG00925	Melrose - Plant Expansion & M	01-Jul-10 08:00	13-Jan-12 17:00
EC00501	Haitang Corporate Park	01-Sep-10 08:00	11-Jan-13 13:35
EC00610	Harbour Pointe Assisted Living	01-Sep-10 08:00	24-Sep-14 10:40
EC00620	Juniper Nursing Home	01-Nov-10 07:00	08-Jan-14 13:48
EC00515	City Center Office Building Ad	01-Nov-10 08:00	03-Jul-13 08:53
NRG00800	Sunset Gorge - Routine Maint	01-Nov-10 08:00	31-Dec-10 14:09
NRG00910	Driftwood - Refuel Outage	01-Dec-10 07:00	16-Jun-11 13:05
MFG00659	Deerfield - Automated System	01-Dec-10 08:00	17-Aug-11 16:15
MFG00772	Cordova - Plant Expansion & M	01-Dec-10 08:00	30-May-12 16:00
NRG00950	Red River - Refuel Outage	01-Mar-11 07:00	27-Aug-11 19:55
NRG00820	Johnstown - Routine Mainten	18-May-11 08:00	12-Jul-11 09:12
EC00630	Saratoga Senior Community	01-Jun-11 07:00	05-Jan-15 16:24
EC00530	Nesbid Building Expansion	01-Jul-11 08:00	17-Oct-13 13:05
NRG00870	Baytown, TX - Offline Mainte	01-Aug-11 07:00	15-Sep-11 13:12
MFG00497	Ravine - Plant Expansion & M	01-Sep-11 08:00	11-Feb-13 17:00
NRG00940	Sillersville - Refuel Outage	03-Oct-11 07:00	24-Jan-12 01:38
MFG00189	Waterville - Automated Syste	03-Oct-11 08:00	19-Jul-12 16:17

Export DCMA 14 details

Copy & Paste the report's details in MS Excel

Export data

Transfer the report's data to MS Excel with simple Copy-Paste.

Benefits

In MS Excel users can do a more detailed analysis of the parameters obtained and make the right decisions about the future of the project.

FileHomeInsertPage LayoutFormulasDataReviewViewDeveloperHelpFoxit Reader PDFTell me what you want to doShare

Book1 - Excel

Ljubisha Mladenovski

H8	A	B	C	D	E	F	G	H	I	J	K	L	M	N	O	P	Q	R	S
1	ID	Metric	Percent	Details	Passed														
2		1 Logic	6.06	8 act.	No														
3																			
4	WBS	Activity ID	Activity N	Start	Finish														
5	EC00620	EC2430	Substantial Completion - All	1/8/2014 13:48															
6	EC00620	EC1010	Building P	11/1/2010 7:00															
7	EC00620.5	EC1420	Start Gara	6/23/2011 13:00															
8	EC00620.6	EC1020	Design Bu	11/1/2010 7:00															
9	EC00620.7	EC1610	Curbs & P	10/14/2011 9:30	1/9/2012 8:18														
10	EC00620.7	EC1000	Curbing	11/1/2010 8:00	2/15/2011 8:00														
11	EC00620.7	EC1040	Electric to	11/1/2010 8:00	2/11/2011 8:00														
12	EC00620.7	EC1050	Electric to	11/1/2010 8:00	12/6/2010 8:00														
13																			
14	ID	Metric	Percent	Details	Passed														
15		2 Leads	11.11	24 rel.	No														
16																			
17	Predecessor	Predecessor	Successor	Successor Name	Relationship Type	Lag													
18	EC1650	Install Bac	EC1580	Stucco Bands	FS	-10.00d													
19	EC1500	Install Ext	EC1520	Install Exterior W/F	FS	-5.00d													
20	EC2270	Pergola ar	EC2360	Landscape & Irrig	FS	-6.00d													
21	EC2090	Erect Prec	EC2250	Fountain/Water F	FS	-4.00d													
22	EC1590	Fire Prote	EC1680	Finishes and Strip	FS	-20.00d													
23	EC1470	Install Ext	EC1510	Install Backing & C	FS	-4.00d													
24	EC1500	Install Ext	EC1570	Install Backing & C	FS	-4.00d													
25	EC1730	Install Ext	EC1830	Install Backing & C	FS	-4.00d													
26	EC1960	Install Bac	EC1940	Stucco Bands	FS	-10.00d													
27	EC1410	Install Ext	EC1490	Install Backing & C	FS	-4.00d													
28	EC1630	Unit Finis	EC2240	Tenant Finishes f	FS	-10.00d													

ReadyScroll Lock

Sheet1

100%

Thank you

Your Feedback

Where do you see the biggest benefit in your case?

FIND OUT MORE:

Contact one of our expert advisors today for more information or a product demo



CONTACT:

+44 (0)208 991 3305
info@milestoneuk.com
www.milestoneuk.com



ScheduleReader™ is not a product of Oracle®, nor it is endorsed, sponsored or affiliated with or by Oracle. Oracle® and P6® are registered trademarks and brands of Oracle Corporation and/or its affiliates.

